

Y&Wstopia

SAN DIEGO DECOM

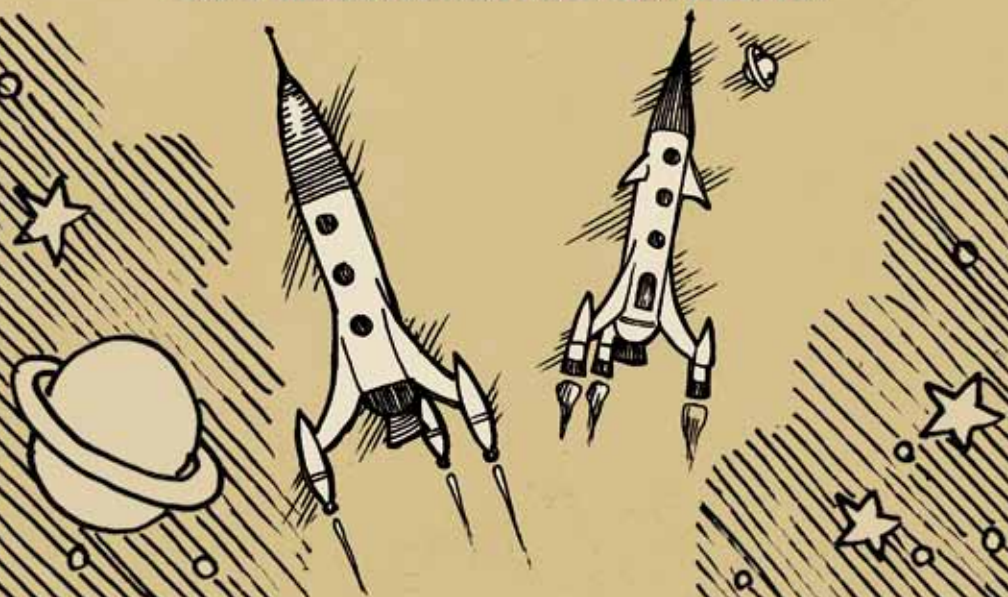
A SPACE TIME CIRCUS

OCTOBER 14-16

2011



LA JOLLA INDIAN RESERVATION



SURVIVAL GUIDE

The Site

THE LA JOLLA INDIAN RESERVATION CAMPGROUNDS

The La Jolla Indian Reservation is a federal reservation of Luiseño Indians in Northern San Diego County, along the southern slopes of Mount Palomar, and was established in 1875. However, the tribe has existed here for thousands of years. Much of the land is undisturbed and is located at the foothills of Palomar Mountain, a semi-wilderness Reservation with the San Luis Rey River running through it.

The majority of the landscape consists of oak trees, abundant wild flowers, sage and other indigenous plants, including roots, berries and seeds, and small and large game, such as rabbit, deer and wood rats. Please help in the care and respect for the Reservation.

Admission

WHEN DOES SAN DIEGO DECOMPRESSION BEGIN AND END?

The event begins at 10 a.m. on Friday, October 14th. The event ends at 6:00 PM on Sunday, October 16th.

Check In

NO GLASS

Our contract with the La Jolla Indian Reservation states that there can be no glass of any kind on site. You will be searched for glass at the gate, by security. Persons trying to enter with glass of any kind will have the glass confiscated. No exceptions.

When you first arrive at San Diego Decompression you will not be greeted by the usual greeters. You will be greeted by a security team that will need to see your ID in order to be able to wristband you according to your age. They will also need to see your ticket or PayPal receipt. In addition, you will be asked to sign a waiver. This is all necessary in order for you to enter our event.



Operations/DOGS (Department of Grunts)

Operations can be found within the DOGS Camp. Lost and Found and a Lead or Event Coordinator on Duty will also be in attendance. Please report any emergencies to Operations. Rangers as well as Event Coordinators and Planning Team Leads (DOGS, City Planners, Fire & Safety) will have radios. Find a Ranger or someone with a radio if you have an emergency and need help.

Fire Safety

FIRES

You may also bring portable fire pits, if they are in a range of 14-18 inches above the ground and have a spark control type screening on them.

Some campsites may have fire rings in them however prior approval from Nero is necessary before you can have a fire.

All portable fire pits must be registered with our Fire Lead Nero. To register, please fill out the Fire and Art Form at <http://sddecom.com/fireform.htm>.

Wood pallets are prohibited on the campground. There will be firewood for sale on-site.

Rules For All Fires

1. Only wood and paper are suitable fuel; burning plastic and trash releases toxic fumes.
2. We are forbidden to burn any native plants or wood found on the property.
3. Don't burn anything that sparks a lot (pallets and treated woods).
4. San Diego Decompression requires that a fire extinguisher and/or water/sand bucket must be present at every fire.
5. Never leave any candle, stove, portable fire pit, or any other fire unattended. San Diego Decompression reserves the right to douse an unattended flame or fire or any fire deemed dangerous.

Please check with our Fire Lead Nero, the Lead on Duty at Operations, or a Ranger if you have any questions before you light up. Please cooperate with San Diego Decompression Fire Lead Nero, any Ranger or Lead, and your neighbor to achieve maximum fire safety at our event. Failure to cooperate and/or participation in deliberately dangerous fire activity could result in your fire being doused and you being asked to leave the event. Again, please be aware: having fires is dependent upon the conditions of the weather as well as the limits of our fire permits.

Fire Art and Performance

If you want to bring your poi, fire fans, staff, "poofer" and other fire art sculptures:

There will be designated fire performance areas that will be marked clearly within the main area. No fire performance will be permitted under trees. Make sure that you are aware of the weather conditions and have checked with the Fire Lead, a Lead on Duty or a Ranger before you light up. If you have any questions about the conditions before lighting up and you would like to bring a fire art sculpture, please fill out the Fire Questionnaire on our website at www.sddecom.com. You may be asked to bring your fire art piece early to have the setup approved by our Fire Lead Nero for our fire permit. Please remember: all fire play, sculptures and art will be dependent on weather conditions.



Firearms

Please do not bring any firearms, handguns, rifles, etc. to San Diego Decompression.

Fireworks

Fireworks are illegal in San Diego County. Please do not bring them to San Diego Decompression.

Participant Responsibilities

Leave No Trace

This is a "Leave No Trace" event. The San Diego Burning Man community respects the environment. We are committed to leaving no physical trace of our activities wherever we gather. You are required to clean up after yourselves and endeavor, whenever possible, to leave such places in a better state than when you found them.

Camping

There are no RV hook-ups. As you would for Burning Man, please come prepared with your own water (recommended 1.5 gallons per day, per person for drinking, cooking, washing, and cleaning during the event), food, shelter, clothing, and power (if you need it).

No campfires that burn wood or leave ashes will be allowed this year. We have an agreement with the Tribe to have fire only if it is fueled by propane or some other form of non ember making fuel.

RV Placement

RV's will be placed by the City Planner. Upon check-in, you will be guided to where you can park your vehicle.

Parking & Driving

Please lock your cars and keep your keys in a safe place. There will be designated parking areas, as well as some areas designated as "no cars". Please respect the "no cars" areas by leaving your car in a designated parking area.

Once your car is parked for the weekend, after you unload, we would prefer that you do not leave the site except in the case of an emergency. There will be firewood and ice for sale available on-site. If, in case of an emergency, you need to leave the site, there is a \$20 per person, CASH ONLY re-entry fee. Please check in with the Will Call booth if you need to leave and want to return.

If you do need to leave the site, please remember that you are going back into the "regular public" and to dress appropriately, just as you would in your own neighborhood back in the city.

Firewood

Due to the fact that October is a risky month in terms of wildfires, outside firewood will not be allowed in. Depending on wind conditions, firewood may be available for purchase on site, but this will be entirely at the discretion of the La Jolla Indian Reservation fire department.

Water

All attendees are expected to provide all of their own water, both for bathing/washing and drinking. Remember to drink plenty of water, especially in the heat of the day. We suggest 1-2 gallons of water per person, per day, depending on your activity level.

Port-A-Potties

"If it doesn't come out of your body, it doesn't belong in the potty!" Please remember that the port-a-potties are designed to receive only human waste and single ply toilet tissue. No handi-wipes, baby wipes, feminine sanitary supplies, diapers, trash, or gray water are to be put in the port-a-potties.

Photos and Video – Rules and Etiquette

Your waiver will have a photo agreement on it, You will be asked to sign it if you will use an audio or video recording device of any kind. This is to protect the privacy of participants and artists alike.

If you are considering filming or videotaping for professional purposes, you must have a commercial agreement on file with us prior to your arrival onsite. Commercial use of images taken at San Diego Decompression without permission is subject to legal action. This includes amateurs and professionals who capture images. You should get permission before taking somebody's photo. The question you have to ask yourself before pressing the shutter is "Am I invading this person's privacy in any way?". If the person is fully or partially nude, in the middle of some obviously very private moment, or doing anything that perhaps they would not want the whole world to see, then yes, you definitely need to ask first – do not press the shutter.

Be safe; be considerate. Always ask permission before photographing anyone. Immediately delete any image upon request.

Minors

Parents or guardians bringing minors to San Diego Decompression should be aware that adult behavior at this event is not required to be limited or hidden merely because minors are in attendance and possibly may observe it. This dictates our policy on your and your minor child's attendance and participation in the San Diego Decompression. We encourage and support radical parental responsibility. Although we do not wish to discourage the attendance of children at our event, we do acknowledge how hard it can sometimes be to control a child at events like ours.

All minors (any persons under 18) must wear the appropriately colored wristbands and be supervised by an adult parent or legal guardian at all times. The names of one or both parent(s) will be written on each minor's wristband upon entry, and a photo taken of all family members. This will assist in locating parents of unattended minors. You may risk having your ticket revoked and you and your child being asked to leave the event, if your child is found unattended during San Diego Decompression.

If you have any questions, comments or suggestions for the San Diego Decompression Planning Team regarding minors, please email us at info@sddecom.com.

Alcohol and Illegal Substances

Responsible use of alcohol is allowed for all adults. We will be checking ID's and placing wrist bands on ALL participants upon entry to San Diego Decompression. Below are some limits we have had to place on theme camps serving alcohol openly at our event. Please understand these are for your protection as well as to limit any underage drinking.



If you are serving alcohol, it is your responsibility that you verify that the person you are serving is over 21 by checking their wristband. Operations will notify you as to the "Over 21" color of wristband. It is within your rights as the server to ask someone who does not look 21 to verify their age to you by checking their ID. You should not serve them alcohol if you have any doubts and they cannot prove their age. Everyone had to show an ID upon entry to this event, so it shouldn't be too hard for someone to go back and get theirs if they look younger than 21. Suggest that they carry their ID with them if they intend to be served any alcohol at other theme camps.

If you are serving alcohol in your theme camp you will be required to place a "You must be 21 to be served" sign (provided by us) that is clearly visible in your entryway. Operations will be giving these signs out upon your theme camp check in. Theme camps will also have the opportunity to make their own, however they will be given one if they do not have one prominently displayed near the entrance of their camp.

No self-serve bars are allowed in theme camps. You are not required as a gifting bar to be open at all times, however Operations does require, for your protection, that you put away and out of sight all alcohol during the times you are closed, unmanned or "dark". Please do not leave your gifting bar unmanned with open alcohol in sight. You may be asked to close it for the duration of the event if this happens. This is for your protection as well as for limiting access to underage drinking.

The use of illegal substances is a serious risk to your health and can result in your arrest.

Community Rules and Etiquette

Bring Your Own! (Cup, Dishware and Utensils)

In the spirit of Burning Man and the Ten Principles, this is a leave no trace event. When visiting gifting camps that provide food and beverages, please do your part to reduce our environmental impact by bringing your own cup, dishware and utensils. Doing so decreases the amount of trash that will need to be removed from the site.

Pets

Please leave all pets at home.

Communications

San Diego Decompression will have limited or no cell phone service, depending on your phone and your service provider.

Help

Please report any emergencies to the Lead on Duty at the DOGS Camp.

Rangers as well as event coordinators will have radios. Find a Ranger or someone with a radio if you have an emergency.

Neighbors

To enhance the quality of our event and build our community, please be willing to help and cooperate with your friends and neighbors. Whether looking for MOOP,* lending some cookware, or gifting a glowstick, please remember, it's not someone else's problem; it is everyone's. *Matter Out Of Place.



Rangers

The San Diego Decompression Rangers are modeled after the Black Rock City Rangers. They are volunteers who are there to help. Think of them as your (usually) friendly neighborhood safety team. We love and respect what they offer and do for us. Please be respectful in your interactions with them and make sure you gift them frequently.

Medical

Ranger Beauty has volunteered her services for first aid and accidents. You can find her or her team at the Ranger Camp. Operations will also have a first aid kit available for minor injuries.

Law Enforcement Officer (L.E.O.)

If you have an encounter with a L.E.O. that you would like to report, please report to the Lead on Duty or an Event Coordinator in the DOGS Camp.

Lost and Found

Lost items can be brought to the DOGS Camp. They will be posted online after the event. If your item isn't there, take heart: everything packed in will get packed up and hauled away. It follows that your lost item will have been also, if not by you, then by another responsible member of the San Diego Burning Man community. Hopefully this responsible person will post something on the Internet once they've unpacked.

What to Bring

You will need to bring enough supplies for self-sustainable camping in a high desert environment (4000' elevation). That means food, water, and shelter.

San Diego Decompression strongly suggests that you arrive prepared to be completely self-reliant. Please bring appropriate clothing and camping gear. It may rain, it may not. It's best to bring something with which you can cover yourself and your stuff so it doesn't get all wet. It may be windy, it may not. Bring rebar for your tents or plan on weighting it down enough so that it does not blow away in case it does get windy.

This is a "barefoot at your own risk" event.

Environment

Plants

Do not damage, break, or remove any plants. Plants which seem dead may only be dormant; truly dead plants are still part of the ecosystem, providing nourishment and shelter for other lifeforms.

Do not use any plants in any condition as "firewood."

Poison Oak

There is a large amount of poison oak on the campgrounds. You can get poison oak by touching the plant, its leaves, roots, whatever. You can get it from your clothing that touches poison oak. You can get it by touching another person who has come in contact with it, even if they themselves aren't manifesting any signs of poison oak. Please avoid coming in contact with poison oak while at the event.



Animals

Don't bother, capture, or kill any animals you may observe. This is their home. Here is some information about animals found at this location that might harm you:

Bees

Africanized bees (aka Killer Bees) would rather avoid you if possible. If you know you are allergic to insect stings bring your own anaphylactic shock treatment. First aid will be available at the Ranger Camp. If you are repeatedly stung report it immediately to a Ranger or Operations; even if you think you've recovered from multiple stings there can be long term medical problems that require further treatment.

Snakes

Snakes are always more frightened of you than you are of them. A number of venomous snakes inhabit this area. Because rattlesnakes can lose their rattles, treat all snakes as potentially dangerous. Always remember to LEAVE ALL SNAKES ALONE! Carrying a walking stick or wearing bells on your shoes helps the snakes know you are coming. If you see one further than 10 feet away, report it to Operations immediately. If you see one closer, freeze in position and have someone contact a Ranger or Operations for you. Snakes will eventually want to move out of the sun, away from you, and into shade or a burrow. If you are bitten have someone contact Operations, a Ranger or someone with a radio immediately.

Scorpions and Spiders

Just leave them alone. If they come into your camp, or public area, please remove them gently using a container and relocate them away from public areas. Find a Ranger or go to Operations if you feel you cannot do this yourself.

Tips

Some areas will be quieter than others, but much music will be enjoyed. Earplugs and earmuffs will help you get to sleep. On the other hand, please be considerate of your neighbors in every way, including reasonable levels of noise. If you are camping in the quiet area, no amplified sound is allowed. Please be aware of your radio and drumming after 10pm.

Protect yourself from the elements by using sunscreen and drinking lots of water, 1 or 2 gallons a day at a minimum. Always having your water bottle handy is an excellent idea.

Make yourself and your camp visible at night to minimize run-ins between feet and tent poles, people, tents and cars, etc.

Lastly

Thank you for participating in San Diego's Regional Decompression Event. We look forward to celebrating the spirit, art and community of our local Burning Man community with you! If you have any questions, concerns or suggestions, please see our website at www.sddecom.com and/or email us at info@sddecom.com.

Directions:

Campground is located up Palomar Mountain on Highway 76, at 22000 Hwy 76, Pauma Valley, CA 92061. YOUtopia will happen in areas 8 and 9 of the campground (see map).

From 15 North

Take Hwy. 76 right (east) 22.5 miles

From 15 South

Take Hwy. 76 (left) east 22.5 miles

From Escondido

Take E. Valley Pkwy. NE East (S6) to Hwy. 76 right (east) for 8.6 miles on the right.

